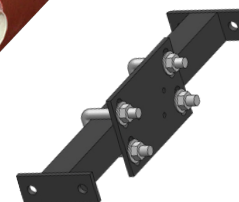
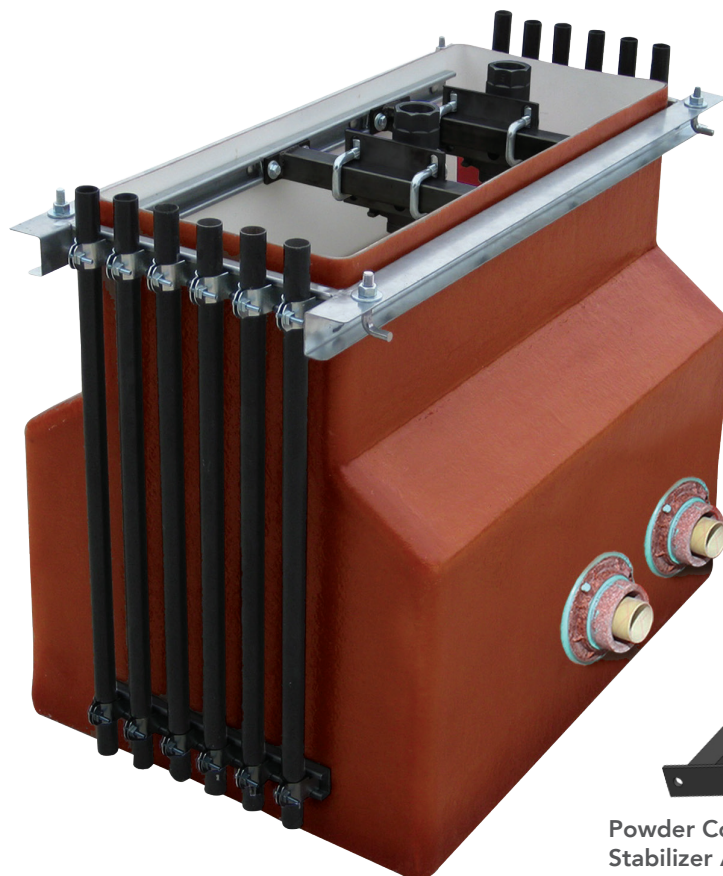




RSC SERIES DISPENSER SUMPS

PCI's RSC (Reduced Steel Conduitless) dispenser sump offers our quality fiberglass in a cost-effective design. Our reduced galvanized steel frame offers excellent corrosion resistance.



Powder Coated Shear Valve
Stabilizer Assembly Kit
(Sold Separately)

ADJUSTABLE HEIGHT

Designed and engineered to allow up to 6" of field adjustment helps ensure proper slope once penetration fittings have been installed off location.

WIDE-BODY DESIGN

Allows ample space for up to 4 Pass-Thru plumbing configurations in a single sump while our tapered top fits inside the most narrow island forms.

DUAL CONDUITLESS ENTRY

Conduit mounting channel is engineered directly into both ends of the steel frame to allow electrical entry in the bottom of the dispenser without penetrating the sump wall.

SINGLE PIECE CONSTRUCTION

Eliminates any seams and provides less places for water penetration.

1" COMPOSITE RAINLIP

Prevents surface water from entering the sump and offers better protection against rust and corrosion than metallic rainlips.

UNIVERSAL STABILIZER BARS

Universal stabilizer bars with 3-axis adjustment accommodate multi-product dispensers without displacing product lines and ensure proper load transfer in case of an impact from any direction.

100% FIBERGLASS

100% high quality, non-corrosive fiberglass provides long-term reliable containment from fuel exposure without voiding warranty, warping, cracking or becoming brittle.

'BRITE-WHITE' INTERIOR

Our signature 'Brite-White' interior reflects light for better visibility and makes identifying leak points easier.

DUO-MOLDED TECHNOLOGY

Our fiberglass sumps utilizes Duo-Molded Technology. Using premium raw materials with a high glass content, we create two layers of fiberglass, offering superior strength and fuel resistance.



Translucent Fiberglass Finish
Brite-White Fiberglass Interior

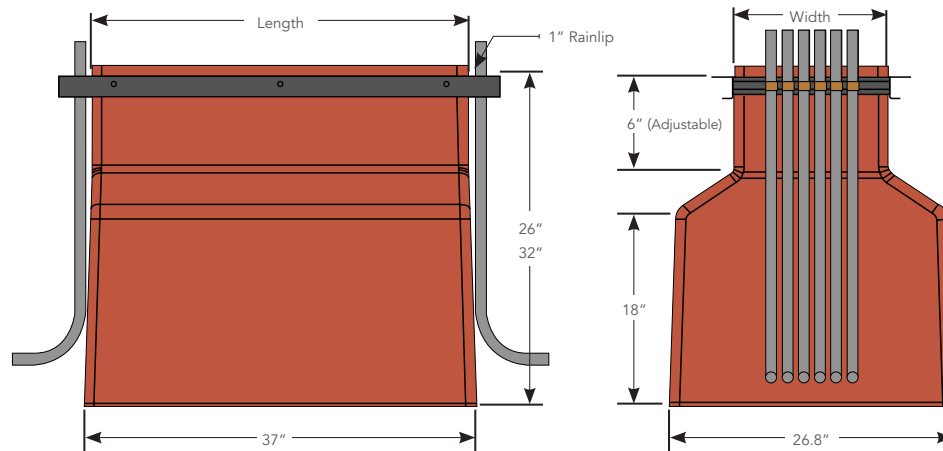
DOUBLE WALL OPTIONS

Available in double wall for a variety of monitoring options to satisfy local regulations and requirements. From dry fluid or fluid filled interstitial to vacuum interstice monitoring, PCI has all options to best fit your installation and compliance needs.





RSC SERIES DISPENSER SUMPS



Dispenser Model	RSC Series	Double Wall Models	Width	Length	Stabilizer Kit
Bennett Pacific	RSC146360B	RSCDW146360B	14.75"	36"	SVU-L
Bennett 3000	RSC120206	RSCDW120206	12"	20.75"	SVU-S
Gasboy Atlas	RSC120206A	RSCDW120206A	12"	20.75"	SVU-S
Gilbarco Encore	RSC174360	RSCDW174360	17.5"	36"	SVU-L
Gilbarco Legacy	RSC120206X	RSCDW120206X	12"	20.75"	SVU-S
Wayne Century	RSC154260	RSCDW154260	15.5"	26"	SVU-L
Wayne Reliance	RSC154260	RSCDW154260	15.5"	26"	SVU-L
Wayne Select	RSC154260	RSCDW154260	15.5"	26"	SVU-L
Wayne Ovation	RSC146360	RSCDW146360	14.75"	36"	SVU-L
Wayne Vista (UHC) HS3, HS4	RSC154260HV	RSCDW154260HV	15.5"	26"	SVU-L
Wayne Vista 48"	RSC112360	RSCDW112360	11.25"	36"	SVU-S

Note: Additional Models Available

PART NUMBER LEGEND			
Series RSC: Standard RSCDW: Double Wall	RSC	120	206
	146	154	174
Width		120: 12"	112: 11.25"
		146: 14.75"	154: 15.5"
		174: 17.5"	
		Length 206: 20.75" 260: 26" 360: 36"	
		Suffix PCI Internal Identifier X: No Rainlip	
		X	